



# NORTH CLACKAMAS PARKS & RECREATION DISTRICT

## DISTRICT ADVISORY COMMITTEE

### MEETING AGENDA

**Date:** March 12, 2025

**Time:** 5:30-7:00 p.m.

**Location:** North Clackamas Aquatic Park, 7300 SE Harmony Road  
Or attend virtually by registering for this meeting:

[https://clackamascounty.zoom.us/webinar/register/WN\\_DK6z-AsxTPG4v4C9ELWgyg](https://clackamascounty.zoom.us/webinar/register/WN_DK6z-AsxTPG4v4C9ELWgyg)

---

- I. **Call to Order** – Jeanette DeCastro, DAC Chair
- II. **Action Items** (5:30 p.m. 5 min)
  - a. Approval of DAC Meeting Summary from February 12, 2025
- III. **Discussion Agenda** (5:35 p.m. 60 min)
  - a. DAC Facilitator Recap (Camille Trummer, Interplay – 10 min)
  - b. System Plan Phase 3 and 4 Update (Design Workshop – 50 min)
- IV. **DAC Member Reports** (6:35 p.m. 15 min) Sub-area-specific reports from DAC members and Budget Committee Liaison report i.e. upcoming event dates, questions/feedback received. Limit each 1-2 minutes.
  - a. Report from Chair DeCastro
  - b. Implementation Team
- V. **District Monthly Report** (6:50 p.m. 5 min)
- VI. **Public Comment** (6:55 p.m. 5 min) Chair will call for statements from community members regarding issues relating to NCPRD. Comments shall be respectful and courteous to all. Limit each 3 minutes.

### Future Dates

- May Agenda Submission by Wednesday, April 16, 5 p.m.
- Next DAC Meeting: Wednesday, May 14, 2025



## MEETING MINUTES

North Clackamas Parks and Recreation District  
District Advisory Committee  
Wednesday, February 12, 2025  
5:30 – 7:00 p.m.  
Location: North Clackamas Aquatic Park and Virtually (via Zoom)

---

**DAC Members Present:** Grover Bornefeld (Subarea 1), Mark Elliott, Anatta Blackmarr (Subarea 2), Jeanette DeCastro, Sheila Shaw (Subarea 3), Joshua Fisher, Daniel Diehl (Subarea 4), Lisa Batey, Ali Feuerstein (Subarea 5), Joel Bergman (Milwaukie Community Center Advisory Board)

**Members Absent:** None

**Staff, Officials, and Guest Speakers Present:** Paul Savas (Clackamas County Commissioner), Kia Selley (NCPRD Director), Erin Reome (NCPRD Planning & Development Director), Kallie Guentner (NCPRD Financial Services Supervisor, Camille Trummer (Interplay)

A recording of this meeting is available on the NCPRD website at <https://ncprd.com/public-meetings/meeting-minutes>

---

- I. **Call to Order** - DAC meeting was called to order by DAC Vice-Chair, Mark Elliott. A quorum was present.
- II. **Action Items**
  - a. Approval of DAC Meeting Summary
    - i. The summary from the DAC meeting held on January 8, 2025, was approved as presented.
- III. **Discussion Agenda**
  - a. Refine Group Agreements and Protocols (Camille Trummer, Interplay)
    - i. Camille provided an overview of the group agreements that were drafted by the DAC members during the January DAC meeting. A copy of the drafted group agreements was included in the February agenda packet. The group agreements included a list of challenges, agreements in response to the challenges, and resources/tools.
    - ii. Camille recommended that if an item comes up that requires a larger discussion, it should be tabled and submitted to the Chair/Vice-Chair to be added to a future agenda to allow enough time to discuss and to prepare information as needed.
    - iii. Camille recommended a feedback form for DAC members and/or public to submit questions/feedback to NCPRD staff. This could also be a tool used to submit requests to have topics appear on a future agenda.
  - b. Fiscal Year 2025-26 Requested Budget Update (Kallie Guentner and Kia Selley)
    - i. The Fiscal Year 2025-26 Budget Update covered the following:
      1. Budget Structure
      2. NCPRD Budget FY 24-25: \$61.5 million
      3. FY 24-25 Projections – Revenues
      4. FY 24-25 Projections - Expenses

5. Budget Strategies – FY 25-26: Opportunities to increase revenues and opportunities to decrease expenses.
6. Key Challenges
7. Public Budget Calendar

#### IV. DAC Member Reports

- a. Sheila Shaw (Subarea 3) – Sheila requested feedback from DAC members to share with the NCPRD Budget Committee before the next Budget Committee Meeting scheduled for February 19.
- b. Lisa Batey (Subarea 5) – Saturday, March 8 will be the grand opening for the City of Milwaukie's three new parks.
- c. Daniel Diehl (Subarea 4) – Errol Heights Park (which is not an NCPRD park, but is just outside NCPRD boundaries near subarea 4) is hosting a cleanup event on Saturday. RSVP through the Johnson Creek Watershed Council.
- d. Ali Feuerstein (Subarea 5) – The City of Milwaukie is now Bee City affiliate. This means there are initiatives in Milwaukie to create more pollinator pathways. Encouraged other subareas to participate as well.
- e. Anatta Blackmarr (Subarea 2) – Stringfield Family Park has a Pollinator event every year. Requested a brief refresh on pesticides used in NCPRD parks. Residents have been requesting benches at Rivervilla Park. At the Concord Property, recommended installing a bench in a specific spot for viewing the sunset. Retiring at the end of June, subarea 2 will have a vacancy to fill. New Century Players would like to be considered for events at both community centers.
- f. Grover Bornefeld (Subarea 1) – Subarea 1, 2 or 3 will all have vacancies in June. Hosting a Mason Bee Cocoon cleaning party at his house this weekend.
- g. Joel Bergman (Milwaukie Community Center Advisory Board) – Bee City USA for Milwaukie is outstanding. Encouraged everyone to get involved.
- h. Mark Elliott (Subarea 2) – Turned in a report for damage that was done at Risley Park and the issue with fixed the same day.
- i. Josh Fisher (Subarea 4) – Gave a shout out to subarea 1 near Alma Myra Park. His daughter lost a stuffed animal there and the neighbors around the park were very supportive in finding her toy.
- j. Jeanette DeCastro (Subarea 3) – No update today, but the next CPO meeting will be April 7 on Zoom.

#### V. District Monthly Report

- a. **Justice Property Acquisition** – There was a parcel for sale adjacent to the Justice Property located at 13849 SE 122<sup>nd</sup> Avenue. Unfortunately, that property has been purchased by a private developer. NCPRD staff pursued acquisition of this parcel before it was available for purchase on the open market, but NCPRD's offer was not accepted. A private developer now owns the property and it is currently under design for redevelopment.
- b. **System Plan Flyer** – The consultant team has updated the NCPRDSystemPlan.com webpage with the recently completed assessment work, the final survey report and a new engagement tool to collect community feedback on priority areas and enhancement projects. The online engagement tool will remain live through the end of this month (February). The consultant team will be in person at the next DAC meeting on March 12 to present the latest plan concepts.
- c. **Concord Property** – Construction continues at the Concord Property and is still on track for a grand reopening this fall, likely in October. Finishes and materials for the community center interior are being selected.
- d. **Lunar Near Year Celebration** – NCPRD hosted this annual event in late January with over 550 attendees at the Milwaukie Community Center.
- e. **Spring Programming** – Registration is now open.
- f. **Design and Dinner Social Event** – NCPRD hosted its first Design and Dinner Social event with over 120 attendees. Participants learned about districtwide initiatives and projects, and had the opportunity to provide input on recreation programming for both the Milwaukie Community Center and future Concord Community Center.

- g. **Updated Fees** – The Board approved updated fees effective July 1, 2025. NCPRD hasn't had fees approved since 2022. This is based on a Board approved policy last fall to allow for a fee increase of up to 3% each year to align with the CPI. If the CPI is less than 3%, then the fee increase would be less than 3%, but fees would never go above 3% unless we intentionally asked the Board for approval of those specific fees, which we did ask for approval of increases over 3%. NCPRD will publish those new fees this spring for summer programming.
- h. **Quarterly Board of Directors Meeting** – February 26, 2025 at the Aquatic Park. We will welcome two new board members: Chair Roberts and Director Fireside.
- i. **Staff Recognition Letter** – NCPRD received a recognition letter from a resident who highlighted the extraordinary staff at the Aquatic Park.

VI. **Public Comment**

- a. Lynn Cutsforth – Recommends not prioritizing the development of Justice Property Park.



# NCPROD System Plan Update

## Presentation to District Advisory Committee

Wednesday, March 12, 2025

DESIGNWORKSHOP

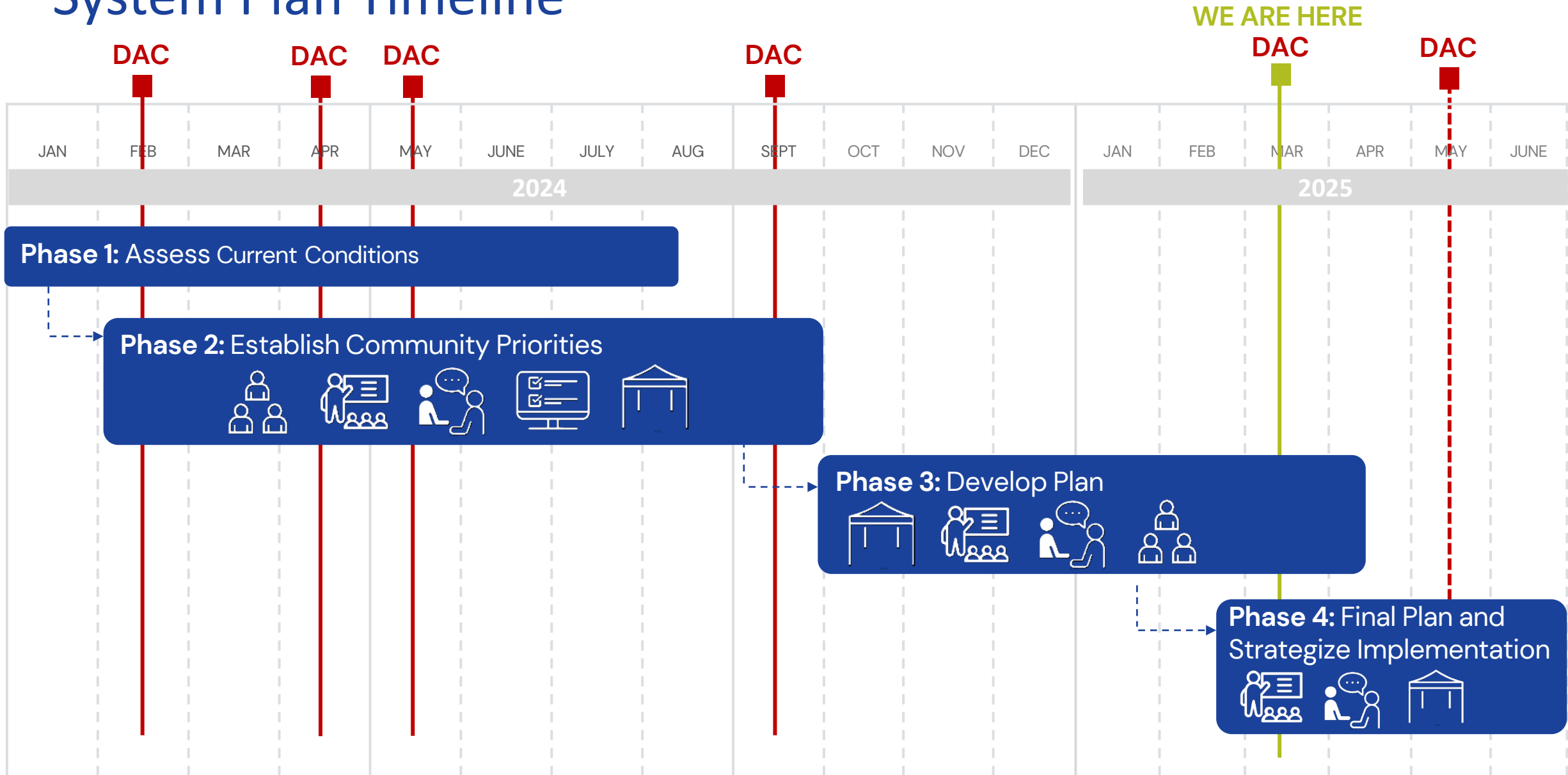


# Agenda

- What We Heard and What We Learned in 2024
- Vision and Goals
- Vision Plan Diagram
- Prioritization Criteria
- Next Steps



# System Plan Timeline





# What We Heard and What We Learned in 2024





# What We Heard | Community and Stakeholder Engagement



282 Random Sample Survey

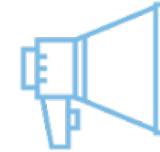
2,262 Open Participation Survey



40,901 Postcards mailed  
(district-wide)



22 Presentations to  
community organizations



67,638 Social reach

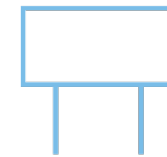
1,276 Social clicks to survey



54,900 Emails sent

26,636+ Emails opened

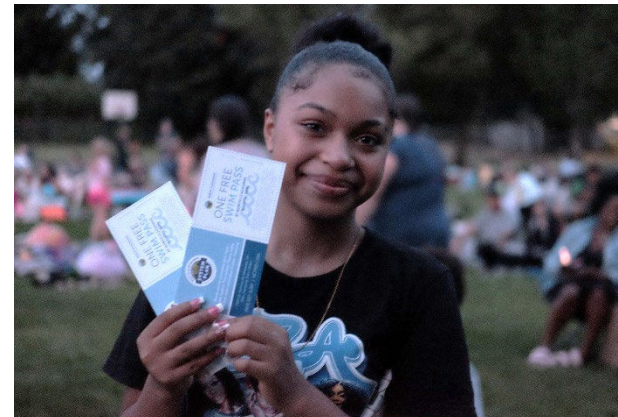
1,266+ Clicks to survey



800 Door hangers distributed

65 Yard signs and a-frame inserts

2 Park floor decals



# What We Learned | Systemwide Assessments

## NCPRD POPULATION KEY DEMOGRAPHICS



106,739  
Total Population



41.3  
Median Age



\$79,765  
Median Household Income



2.44  
Average Household Size

Community Profile

	North Clackamas Parks and Recreation District (NCPRD), OR	Bend Park and Recreation District, OR	Waukegan Park District, IL	Willamalane Park and Recreation District, OR
Total Operating Spending	\$11,658,719	\$33,623,971	\$13,850,069	\$23,110,393
Operating Spending per Capita	\$109	\$310	\$156	\$321

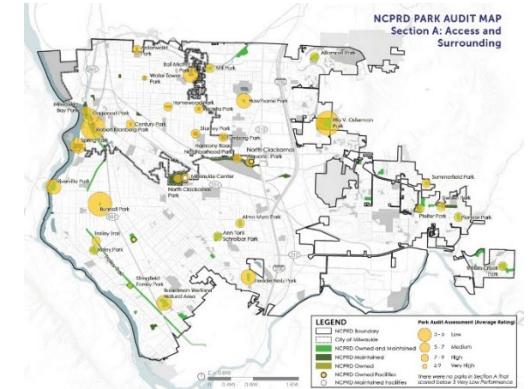
Benchmarking

## Program Summary

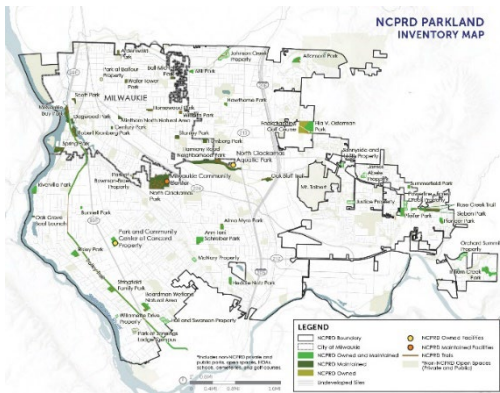
- In some areas such as **Summer Camps**, NCPRD's rates are **comparable** to its peers. However, the **lack of facilities and resources** does not allow NCPRD to offer more higher cost programs.
- Compared to its peers, NCPRD is **very generous** with **admission costs** to the Aquatic Center. The other peers' aquatic center is also part of a larger fitness facility, so the offering of **membership** enables members to use and **enjoy multiple facilities and classes**.
  - Many fitness classes are **offered for free** with membership.
- The peers tend to only charge **20% more** for non-residents vs 25% of NCPRD.
  - A **larger selection** of programs helps bring in revenues.



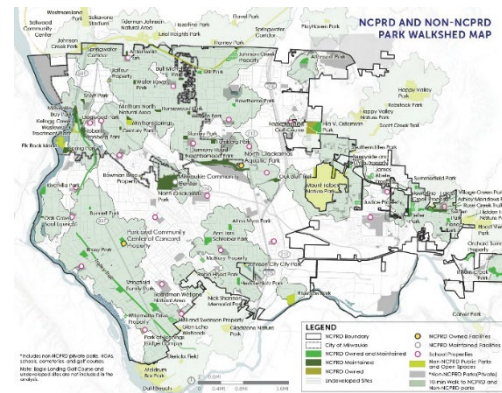
Operations & Maintenance & Recreation Analyses



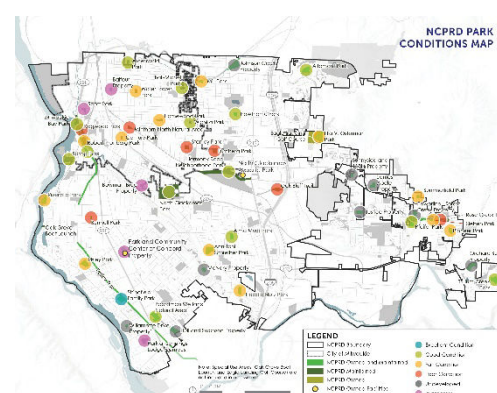
Community Navigator Park Perception Audit



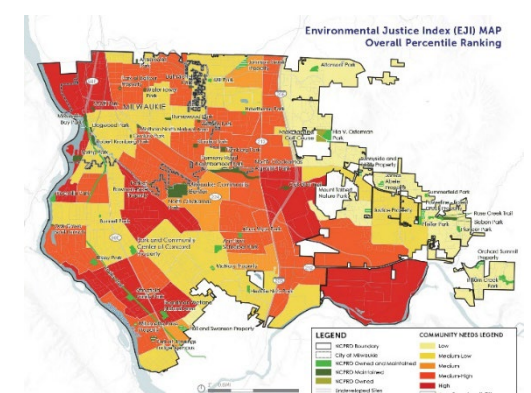
Parkland Inventory and Deficiencies



Park Access Level of Service



Condition & Quality Assessment



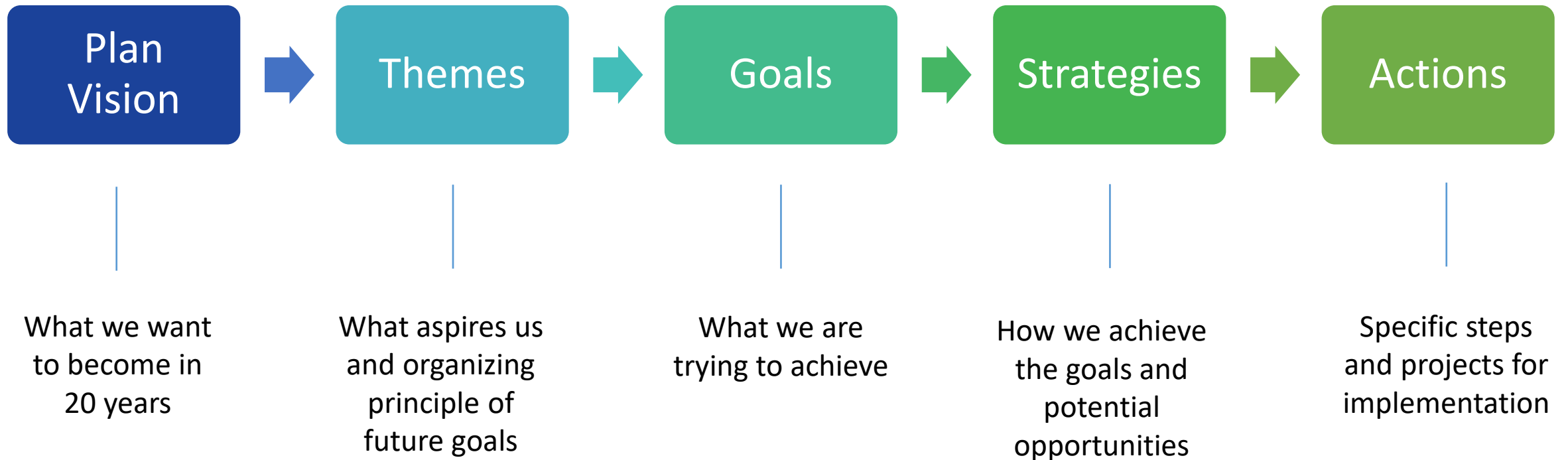
Environmental Justice Index Mapping



# Vision and Goals



# Plan Organization



# Proposed Mission and Vision

**2015 District Mission:** *To enrich community vitality and promote healthy living through parks and recreation.*

**District Mission:** To enrich community vitality and promote healthy living through connections to nature and play.

**2015 Plan Vision:** *Enhancing and connecting your community by providing exceptional parks and recreation opportunities for all.*

**Plan Vision:** Enhancing community with exceptional parks, natural areas, and recreation opportunities that welcome all.



# Proposed Themes



CARE FOR AND  
INVEST IN PARKS  
AND RECREATION



CONNECT TO  
NATURE



PLAY FOR ALL



ENRICH OUR  
COMMUNITY

# THEME 1: CARE FOR AND INVEST IN PARKS AND RECREATION

*Aspiration: Care for our existing system while providing a strong foundation for future opportunities.*

**GOAL 1:** Prioritize investments and improvements in areas of high community need.

**GOAL 2:** Strengthen partnerships and interdepartmental collaboration.

**GOAL 3:** Care for what we have now while also looking toward expanding offerings and access over the next decade.

**GOAL 4:** Ensure quality and longevity of the park and recreation system through long-term fiscal sustainability of the District.



# Strategies Highlights – Partnerships

**GOAL 2:** Strengthen partnerships and interdepartmental collaboration.

## DRAFT STRATEGY SUMMARIES

1. Work with the existing Foundation at the Milwaukie Community Center to expand roles and responsibilities.
2. Align with a non-profit community-formed organization such as a park conservancy.
3. Strengthen relationships with the school districts.

## DRAFT DETAILED STRATEGY EXAMPLE:

Align with a non-profit community-formed organization such as a park conservancy.

The park conservancy will act as an advocate for the District. It can grow and take on more responsibilities over time.





# Strategies Highlights - Funding

**GOAL 4:** Ensure quality and longevity of the park and recreation system through long-term fiscal sustainability of the District.

## DRAFT STRATEGY SUMMARIES

1. Pursue increased NCPRD funding sources.
2. Diversify external funding sources.
3. Expand revenue generating activities in park spaces.

## DRAFT DETAILED STRATEGY EXAMPLE:

Pursue increased NCPRD funding sources including a property tax increase.

76% of the respondents expressed that they are very likely or somewhat likely to support additional funding and spending for parks and recreation improvements in the future.

## SURVEY HIGHLIGHT



# THEME 2: CONNECT TO NATURE

*Aspiration: Connect to nature, embracing and protecting natural resources and mitigating climate change impacts.*

**GOAL 1:** Increase community access to the outdoors, nature, and water.

**GOAL 2:** Create a districtwide network of trails to enhance movement, connectivity and enjoyment in the natural environment.

**GOAL 3:** Connect people to natural places and their restorative benefits.

**GOAL 4:** Foster a sense of curiosity and stewardship for nature through enhanced signage, access, and learning opportunities in the District.

**GOAL 5:** Enhance community resilience through climate adapted landscapes, facilities, and program offerings.



# Strategies Highlights – Trails

**GOAL 2:** Create a districtwide network of trails to enhance movement, connectivity and enjoyment in the natural environment.

## DRAFT STRATEGY SUMMARIES

1. Connect people to destinations through a trail network.
2. Prioritize trails and paths that are close to home.
3. Formalize design and maintenance standards based on industry best practices.

## DRAFT DETAILED STRATEGY EXAMPLE:

Connect people to parks, facilities, and recreational destinations through a safe, accessible, easily navigable, and well-connected trail network.

Top 3 Parks and Facilities People Want to See Offered in the future

1. **Trails for walking, biking, and rolling (60%)**
2. Natural areas and conserved open space (55%)
3. Spray water play/splash pads (29%)

## SURVEY HIGHLIGHT



# THEME 3: PLAY FOR ALL

*Aspiration: Promote health and lifelong learning by providing parks, natural areas, facilities, and recreational opportunities for all ages and abilities.*

**GOAL 1:** Provide recreation programs and places to play that meet the needs of a broad range of ages, abilities, and backgrounds.

**GOAL 2:** Reduce gaps in parks access and programming using the variety of tools and resources in our community.

**GOAL 3:** Offer affordable recreation programs and facilities to encourage participation and reduce financial barriers.

**GOAL 4:** Provide ongoing communications to meet community needs and proactively follow national trends.



# Strategies Highlights – Recreation and Programming

**GOAL 2:** Reduce gaps in parks access and programming using the variety of tools and resources in our community.

## DRAFT STRATEGY SUMMARIES

1. Offer programs for age groups that are often overlooked.
2. Partner with local sports leagues to offer additional organized adult sports programs.
3. Support a dynamic programming evaluation process for all program offerings.



## DRAFT DETAILED STRATEGY EXAMPLE:

Offer programs for age groups that are often overlooked, such as teens, younger adults, professionals, and family programs.

Comparing to other benchmarking districts, NCPRD is lacking:

- Teens programs
- Younger adults programs
- Professional programs
- Family programs

**Benchmarking  
Finding**



# THEME 4: ENRICH OUR COMMUNITY

*Aspiration: Strengthen connections through events, activities, recreation programming, and communication that celebrate the diversity of identities in our community.*

**GOAL 1:** Celebrate and honor cultures, languages, storytelling, art, and history of distinct communities in North Clackamas.

**GOAL 2:** Create community togetherness and foster welcoming environments through recreational and cultural offerings in parks, facilities, and programs.

**GOAL 3:** Craft programs and partnerships that support the health of residents through recreation programs and events.

**GOAL 4:** Adapt recreation, activities, and events to meet the current and future recreation needs of the community.



# Strategies Highlights – Universal Design and Accessibility

**GOAL 3:** Craft programs and partnerships that support the health of residents through recreation programs and events.

## DRAFT STRATEGY SUMMARIES

1. Develop partnerships to offer targeted programs.
2. Expand engagement of young people and older adults.
3. Support a culture of volunteerism.

## DRAFT DETAILED STRATEGY EXAMPLE:

Develop partnerships with community organizations, healthcare providers, and disability advocacy groups to facilitate the development of targeted programs and initiatives tailored to the needs of specific demographic segments.

Desire to have more spaces and programs that are accessible to people of all abilities, including mental and physical abilities.

**Focus Group  
Discussion  
Takeaway**





# Vision Plan Diagram

Priority Areas  
Enhancement Opportunities





# Priority Areas

## ASSESSMENTS TO IDENTIFY GAPS IN SERVICE AREAS

### PARK ACCESS GAPS

Areas outside of NCPRD's 10-minute Park Walkshed Analysis.

### ENVIRONMENTAL JUSTICE PRIORITY ZONES

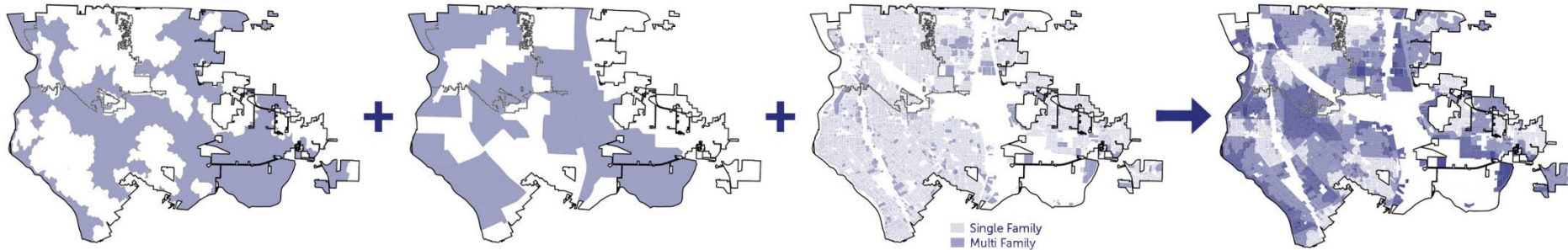
Areas with high and medium combined social, environmental, and health impacts identified through the CDC's Environmental Justice Index (EJI) Analysis.

### RESIDENTIAL DENSITY

Single and multi family residential parcels indicating areas of residential density.

### HIGH NEEDS AREAS OVERLAY

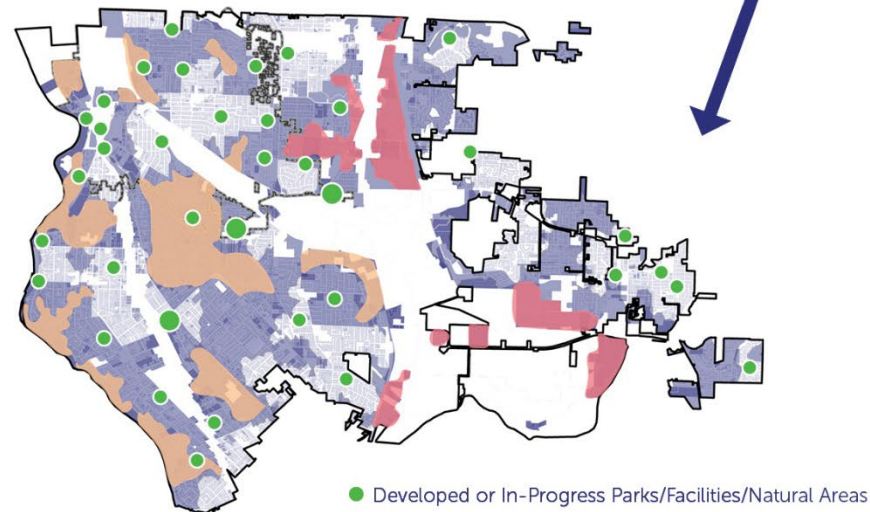
Overlay of the park access gaps, high and medium environmental justice priority zones and areas of residential density.



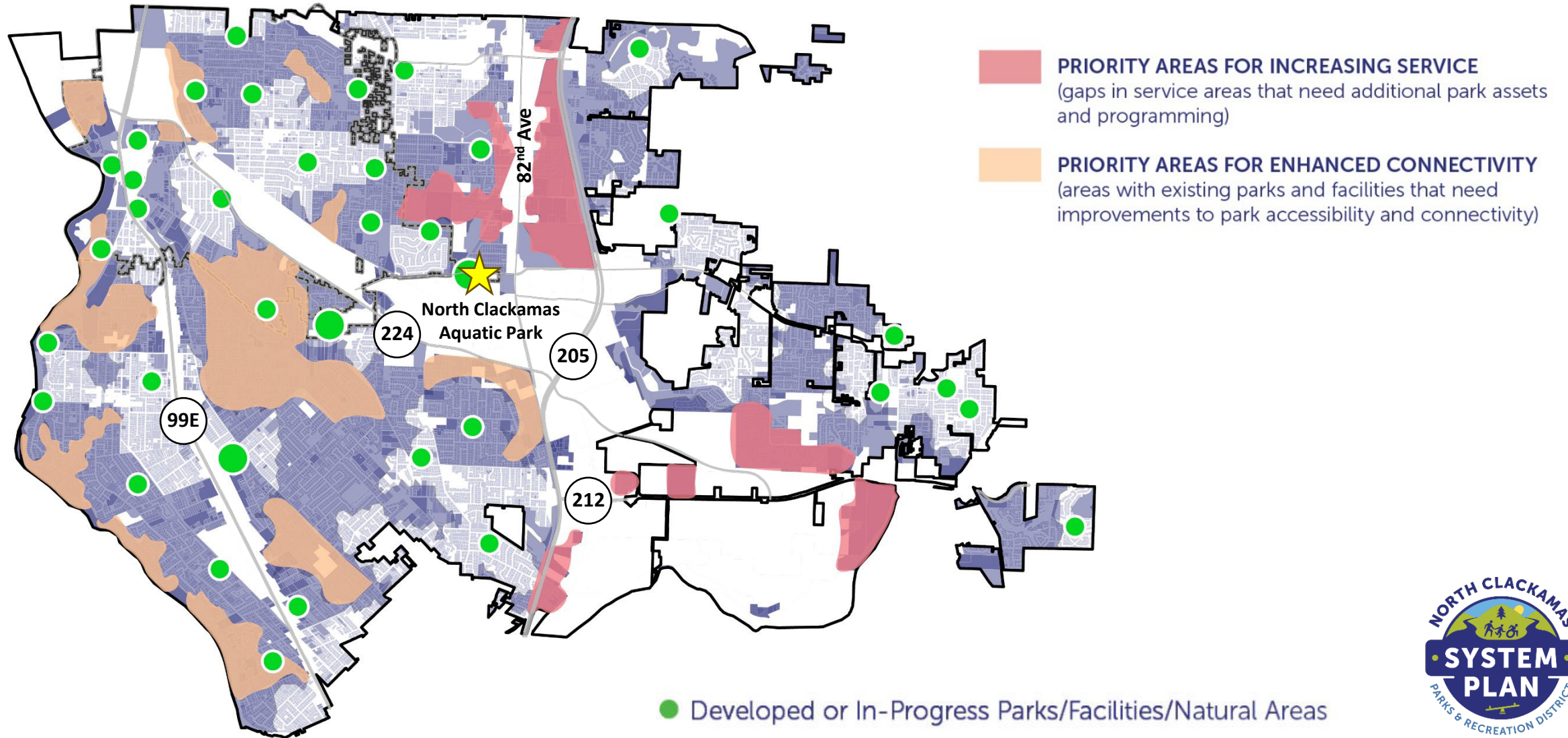
## IDENTIFIED PRIORITY AREAS

**PRIORITY AREAS FOR INCREASING SERVICE**  
(gaps in service areas that need additional park assets and programming)

**PRIORITY AREAS FOR ENHANCED CONNECTIVITY**  
(areas with existing parks and facilities that need improvements to park accessibility and connectivity)



# Priority Areas



# Engagement – Map Input Opportunity

## Online Engagement Tool (Social Pinpoint)

### Advertisements

- Email Blasts
- Pop-up Events
- Social Media Posts

Duration: Open from January 24 to February 28, 2025.

### Vision Plan Diagram Mapping Exercise

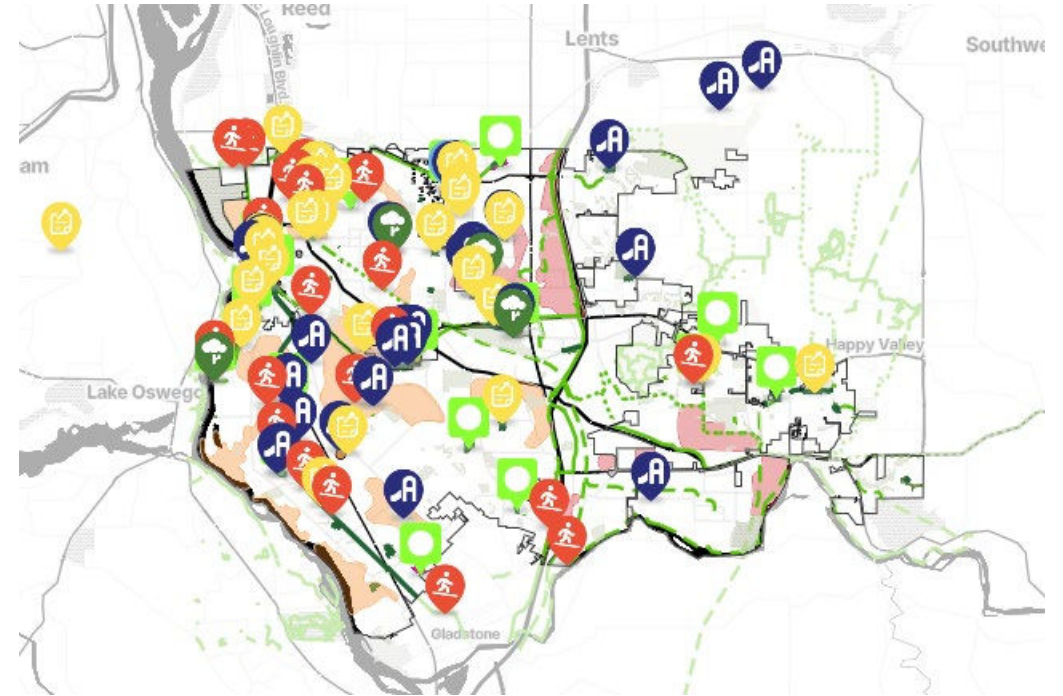
- Review and comment on the identified enhancement opportunities
- Add your own enhancement opportunities



Total of **164** contributions



Total of **306** Votes



Social Pinpoint mapping exercise was closed on February 28. Results are currently being summarized, which will inform the Final Vision Plan Diagram.

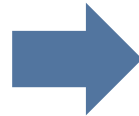
# Enhancements Opportunities

## COMMUNITY INPUT

- Community-wide Statistical Survey
- Pop-up Events
- Focus Group Meetings
- Community Navigator Park Audit
- Social Pinpoint (On-going)

## TECHNICAL ASSESSMENTS

- NCPRD Staff Meetings and Workshops
- Recreation Trends
- Prior Document Review
- Condition and Quality Assessment
- Operations and Maintenance Assessment
- Recreation and Programming Assessment



## IDENTIFIED ENHANCEMENT OPPORTUNITIES



**Enhanced  
Play and Recreation**



**Enhanced  
Access to Nature**



**Enhance Access to Water  
for Active Recreation**



**Trail Improvement  
Opportunities**



**PRIORITIZATION  
ACTION ITEMS  
CAPITAL IMPROVEMENT  
PROJECTS**



# Enhancements Opportunities

**Enhancement Opportunities:** These are opportunities to improve our existing parks and facilities based on community feedback received April – August 2024 and findings from various systemwide assessments. What we heard people would most like to see over the next 20 years.



**Enhanced Play and Recreation:** play areas, play structures, community gathering areas, sports fields, event spaces etc.



**Enhanced Access to Nature:** natural areas, habitats, wildlife viewing, walking/biking/rolling in nature, environmental education etc.



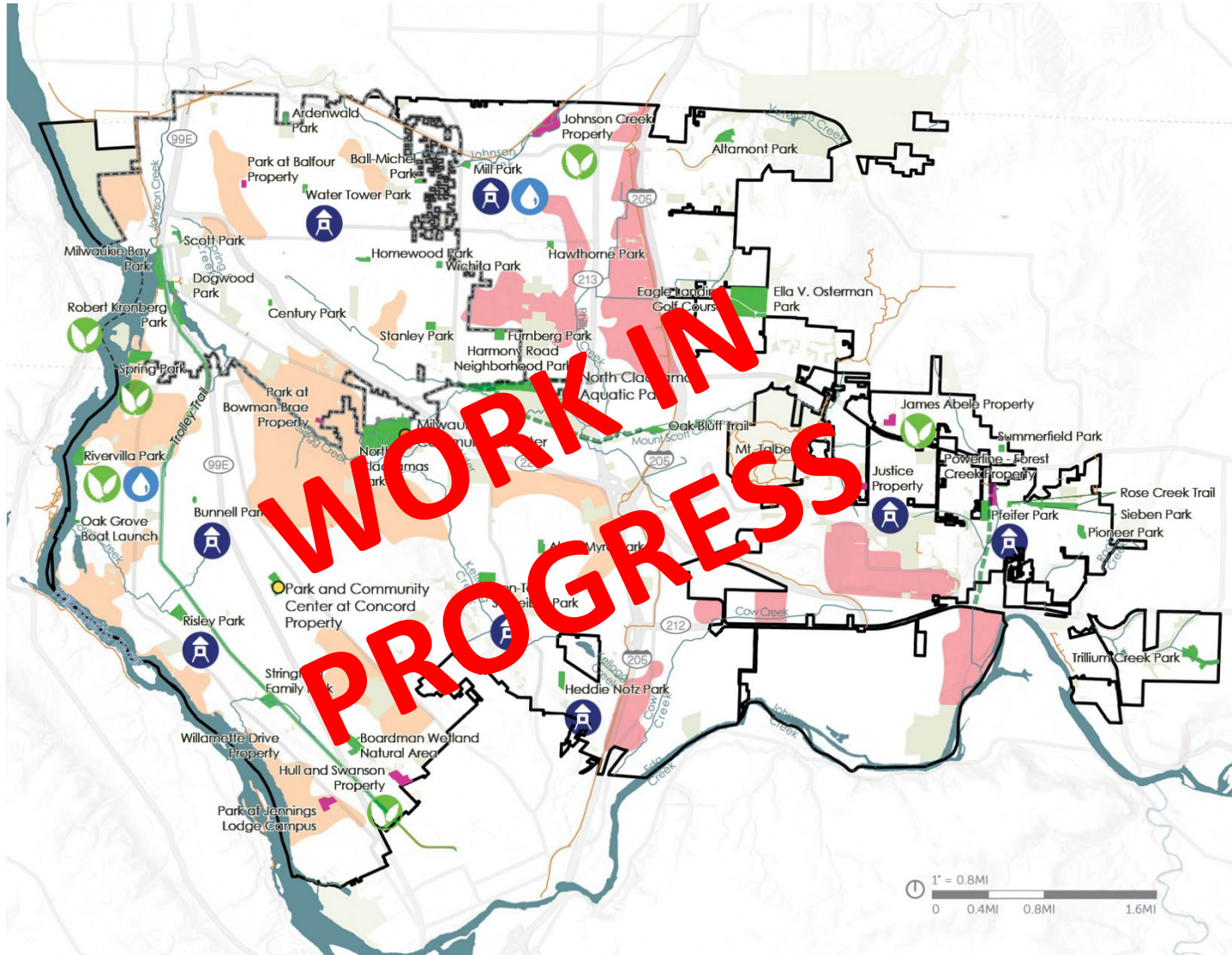
**Enhance Access to Water for Active Recreation:** river and creek access, walking/biking/rolling along river and creeks, water-based activities, water play etc.








**Trail Improvement Opportunities:** additional trail development, connections to regional trails, enhanced trail safety, etc.



# In-progress Vision Framework Diagram



-  Priority Areas for Increasing Service
-  Priority Areas for Enhanced Connectivity
-  Enhanced Play and Recreation
-  Enhanced Access to Nature
-  Enhanced Access to Water for Active Recreation
-  Trail Improvement Opportunities

**LEGEND**

 Parks	 NCPRD Trolley Trail
 Undeveloped Sites	 NCPRD Existing Trails
 Non-NCPRD Open Spaces (Private and Public)*	 NCPRD Proposed Trails
 NCPRD Owned Facilities	 Non-NCPRD Major Trails
 NCPRD Maintained Facilities	 NCPRD Boundary
	 City of Milwaukie

\*Includes non-NCPRD private and public parks, open spaces, HOAs, schools, cemeteries, and golf courses.





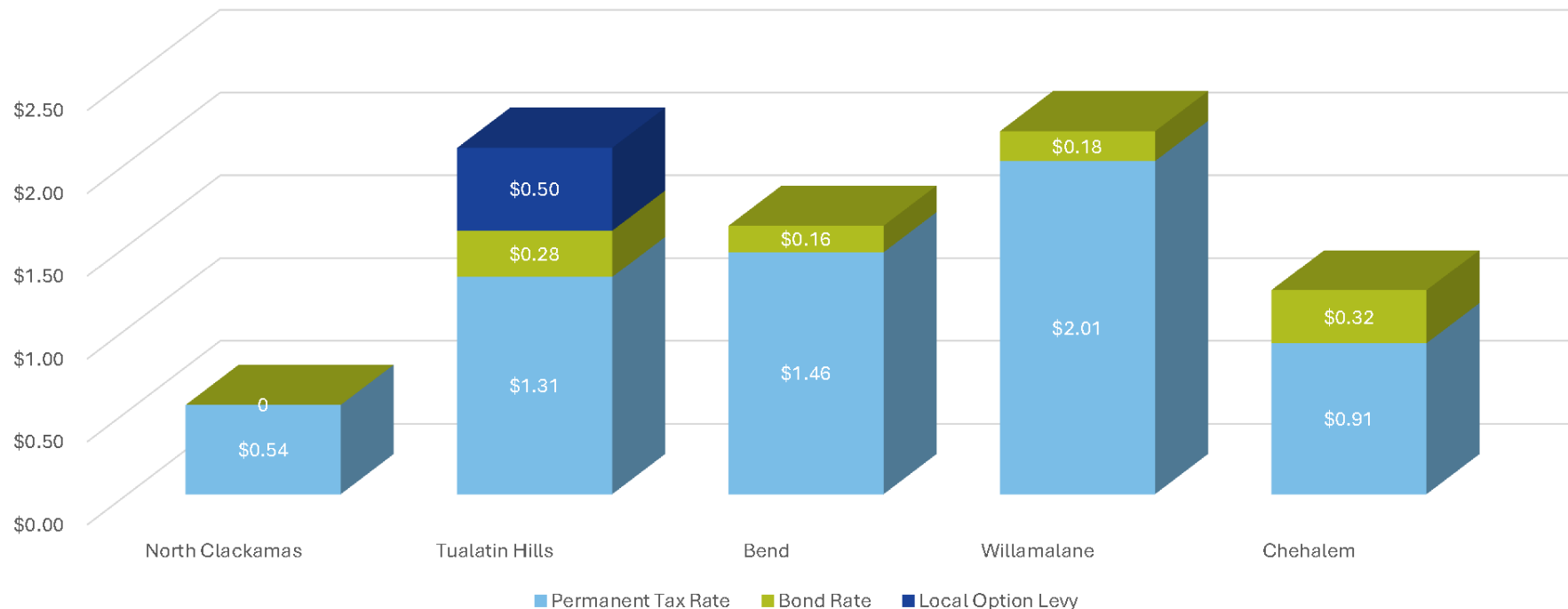
# Prioritization Criteria

Strategies  
Action Items



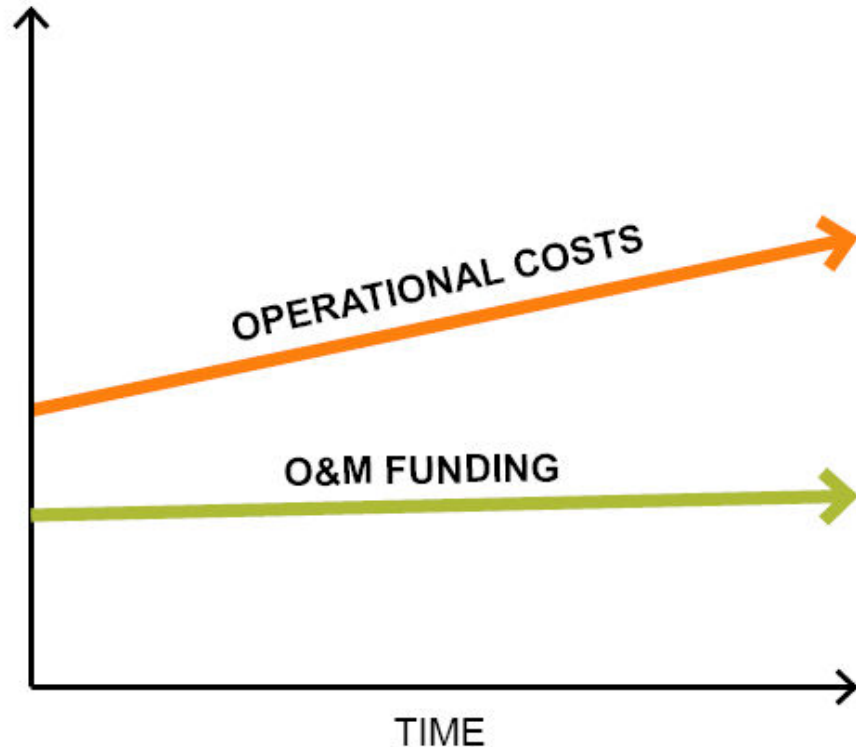
# FY 25-26 Budget Update – Key Challenges

- Revenues have not kept pace with inflation: permanent tax rate of \$0.54 /\$1,000.
- Planned \$50M Capital Bond Measure never presented to voters to fund new parks and facilities which increases reliance on System Development Charge (SDC) funds.
- SDC fees for new development are insufficient with inflation.





# NCPRD FUNDING NEEDS



Primary Funding Source: General Fund funds operations and maintenance, programming, and services.

- Fixed permanent tax rate isn't keeping pace with inflation.
- Rising operational costs.
- System Development Charges (SDCs) are a separate funding source that can only be used for new development/amenities.

# Next Steps

- Late Spring: Staff to evaluate and prioritize action items, timeline, and funding
- Early Summer: Public review and DAC review of the draft plan
- Late Summer: Final plan and adoption





Thank you!

DESIGNWORKSHOP





## **NCPRD MONTHLY DIVISION REPORT**

Prepared for the NCPRD District Advisory Committee (DAC)

Reporting Period: February, 2025

DAC Meeting Date: March 12, 2025

### **ADMINISTRATION**

#### **FINANCE**

- **March 2025:** The fiscal year 2025-26 proposed budget will be reviewed by the County Administrator.
- **Recruitment:** Efforts are currently underway to fill the vacant Accountant 2 position.

#### **Looking Ahead**

- **May 2025:** The fiscal year 2025-26 Proposed Budget will be distributed, and the annual Budget Committee Meeting will occur.
- **June 2025:** The fiscal year 2025-26 NCPRD Adopted Budget will be submitted to the NCPRD Board of Directors for approval.

#### **MARKETING & COMMUNICATIONS**

- **Website Refresh:** With the design finalized, the website development is underway, including copywriting, identifying digital assets, and building out pages.
- **System Plan Promotion:** Coordinated with the Planning and Development Team to increase awareness and engagement around the System Plan Project and the Design Dinner Social. The team developed promotional materials for distribution to community partners and groups, and leveraged targeted digital communications, including email blasts and social media.
- **Discovery Guide:** NCPRD is bringing back its full Discovery Guide, the first since before the pandemic, to provide a comprehensive view of program offerings and services. The Guide will be prominently featured online, with a limited batch of printed copies available at facilities. Production is underway, and the guide will be released in March, prior to summer registration opening.

### PLANNING & DEVELOPMENT PROJECTS

- **Park at Jennings Lodge Campus:** The County's Design Review is complete. Staff and the consultant team are reviewing the conditions for approval and working on the final design and engineering (construction documents). Staff are also preparing three grant applications that will help fund construction, with construction anticipated in spring 2026. A public process will be conducted to select a name for the new park prior to the park opening.
- **Park at Concord Property:** Work has commenced on the outdoor, two-stall restroom and park shelter and the first layer of asphalt has been installed in the main parking lot. Project completion is estimated in fall 2025. A web camera provides a view of site construction that is refreshed every few minutes. You can access the camera as well as construction updates for the park and community center using this link: [new.express.adobe.com/webpage/IG5Adw6CT4y1Vs](https://new.express.adobe.com/webpage/IG5Adw6CT4y1Vs).

- **Playground at Concord Property:** Utilities have been installed under the playground area and site work has begun. One of the large sculptural climbing pieces arrived, along with a wide concrete slide. A crane lifted the climber, in the shape of a barn owl, from a flatbed truck and placed it on the top of the highest mound on the playground. One of the many ways to get down from the mound is to slide down the concrete slide. This slide is "triple-wide" and includes a transfer platform as well as an accessible grab bar for wheelchair access at the top of the slide. The extra width allows a child to wait at the bottom while their caregiver brings their mobility device back to them, while other children still have room to use the slide. Rough grading of the water play feature is complete.



- **Community Center at Concord Property:** A significant portion of the limited budget available in this phase is needed for updates that maintain the integrity of the building, as well as the basic systems required to open the building to the public. The roof Replacement of the roof and HVAC (heating, ventilation, and air conditioning) system are nearly complete. The new elevator has been installed and is undergoing final inspections from the County. Additional site work will prevent water damage to the building by routing storm water to the new storm water facility near the parking lot. Selection of furniture, fixtures and material finishes is underway for the rooms that will be open to the public. Only a portion of the building will be accessible to the public due to limited funding in this first phase of renovations. The building is expected to open to the community in fall 2025.
- **System Plan:** Draft Vision and Goals statements have been developed for the project, along with preliminary priority areas in the district for increased service, improved access,

and opportunities for enhancements to existing parks and facilities. This work has been directly informed by the community feedback and assessments completed during the early phases of the project. Draft materials are available for review on the System Plan website ([ncprdsystemplan.com](http://ncprdsystemplan.com)) and were featured at both NCPRD's Lunar New Year Festival and Design and Dinner Social events, as well as through an online engagement tool that was sent out for community input during the month of February. Staff are currently working with the consultant team to develop Strategies, Actions, and a list of sequenced capital improvement projects.

- **Trails Network Plan:** ODOT has issued an intent to award notice to the consultant teams and preliminary contract negotiations are now underway. The project is on track for project kick-off in summer/fall 2025.

#### **PARTNER PROJECT SUPPORT (non-NCPRD projects)**

- **Kellogg Creek Confluence Restoration and Community Enhancement Project (impoundment sediment sampling):** The Kellogg Creek Restoration and Community Enhancement Project will reestablish fish passage into the Kellogg-Mt. Scott watershed, restore lower Kellogg Creek habitat and its floodplain through the City of Milwaukie, improve long-term community resiliency and access to nature, and modernize vulnerable multi-modal transportation infrastructure. This project is a collaborative effort led by North Clackamas Watershed Council, City of Milwaukie, Oregon Department of Transportation, and American Rivers. In mid-December, Metro Council approved \$10M in funding for the project from Metro's Large Scale Community Visions Program.
- **Beebe Island Side Channel Reconnection Project:** A Clackamas River Basin Council (CRBC) led project. The project proposes to improve side channel connections at the inlet, as well as off-channel alcove habitat. CRBC has developed a final design concept and will be advancing the design to ready for obtaining the necessary permits.
- **Johnson Creek Confluence Restoration:** A Johnson Creek Watershed Council led project. This project will construct large wood complexes in the lowest reach of Johnson Creek, including the confluence with the Willamette River. The proposed undertaking will be utilizing the existing boat ramp at Milwaukie Bay Park to offload logs into the project area; however, this undertaking will not adversely affect NCPRD. Exact construction dates are to be determined.
- **Boardman Sewer Line Replacement at Trolley Trail:** An Oak Lodge Water Services District led project. This project will replace a section of wastewater main near Boardman Avenue and Hwy 99E in spring 2025. There will be flaggers, resulting in delays to trail users of no more than 20 minutes. A proposed trail re-routing will also be available during construction. An easement between OLWSD and NCPRD was executed in November to allow this construction project
- **Construction of Aquifer Storage Recovery (ASR) Building at Sieben Park:** A Sunrise Water Authority (SWA) led project. The ASR building is approximately 200 sf and will be constructed along the eastern boundary of NCPRD's Sieben Park. SWA is working on re-submitting their non-conforming land use application. Once land use is obtained, they will begin progressing designs for construction.

- **3-Creeks Protected Area Floodplain Enhancement Project:** A Water Environment Services (WES) led project. This project will enhance floodplain, improve water quality, improve fish and wildlife habitat, and provide opportunities for pedestrian access and environmental education on the site, where feasible.

**CAPITAL IMPROVEMENT PROJECTS FY 24-25**

Item	Current Activity	Next Steps	Timeframe
System Plan	Integrating community feedback on vision, goals, and plan concepts. Development of strategies, actions, and project sequencing.	Consultant develops the draft plan for public review.	Spring 2025
Trails Network Plan	Contract negotiations	ODOT contract approval	Summer 2025
Park at Jennings Lodge Campus	Finalize design based on County Design Review; staff applications for grants to help fund construction	Construction drawings; refinement of cost estimate	Summer 2025
Park at Concord Property	Advise on construction activities and cost control	Advise on construction activities and cost control	Summer 2025
Playground at Concord Property	Advise on construction activities and cost control	Advise on construction activities and cost control	Spring 2025
Community Center at Concord Property	Advise on construction activities and cost control	Advise on construction activities and cost control	Summer 2025
Park at Justice Property	On hold	-	-
SDC Methodology	On hold	-	-
Milwaukie Bay Park	On hold	-	-

## PROGRAMS & COMMUNITY CENTERS

### AQUATICS

- **Auto-Fill Repair:** NCPRD's new maintenance contractor replaced the auto-fill in the wave pool (see picture).
- **Snow Day/Make-up Lessons:** Swim lessons were extended to March 4 as a make-up day due to an inclement weather cancellation.
- **Spring Registration:** A successful spring registration for swim lessons with 760 participants.

### Looking Ahead

- **April 2025:** Registration is open for the spring lifeguard course. Classes beginning the first week of April.



### OLDER ADULT SERVICES

- **Shelf-Stable Meals:** Prior to the snow event of Feb. 13-14, the Milwaukie Community Center's Meals on Wheels clients had received two shelf-stable meals in preparation for inclement weather. This enabled the drivers and staff to remain safely at home while the clients had food for the snow days.
- **March for Meals:** This critical Nutrition Program Fundraiser, operated by the MCC foundation, raises funds that go directly into the Nutrition Program's operating budget. It begins at the end of February and runs through the middle of April.



### Looking Ahead

- **Apr. 5, 2025 (9 a.m.):** MCC Annual Volunteer Appreciation Brunch, Milwaukie Community Center



## RECREATION AND SPORTS

- **New Intro to Fermenting Class Series:** The new "Intro to Fermenting" three-class series was a hit, attracting 40 participants eager to learn the art of fermentation. The first class focused on making sauerkraut, one of the most beloved fermented vegetables. The second session dove into the world of kombucha, where participants learned how to brew their own tangy, probiotic-rich tea at home. The third class explored winter vegetables, turning hearty root vegetables like beets, carrots, kohlrabi, winter radishes, and parsnips into vibrant, nutrient-packed fermented treats perfect for the colder months.



- **Summer Event Sponsorships:** Recreation is dedicated to hosting engaging and accessible community events. NCPRD is currently seeking sponsorships for upcoming events: Concert in the Park, Movies in the Park, and Fiesta Latina en el Parque. Sponsorship opportunities offer businesses valuable community exposure and recognition while helping build connections between local businesses and residents.
- **Teen Night:** On Friday, Mar. 7, teens (grades 6-12) gathered for our fifth teen night event this fiscal year. The free event allowed teens to explore four different cultures – Asia, Africa, Europe, and Latin America – through rotating activities such as playing Lotería, playing the traditional Chinese game Pitch-Pot, enjoying African drumming rhythms, and creating Scandinavian folk art paintings. On average, 27 teens attend each teen night.
- **Winter Dance and Cheer Stars:** The first performance was held on Tuesday, February 18. Families thoroughly enjoyed the show, which concluded with spectators being invited to join in on the fun while dancing to the Hokey Pokey and Baby Shark. The program's final performance is on Saturday, Mar. 15.
- **Pre-Kindergarten Basketball:** The last session was Wednesday, February 19. Seventeen out of 25 families completed surveys; all 17 were satisfied or better. Many commented on how much they enjoyed learning from our two staff instructors.
- **Hoopers Basketball:** The winter storm impacted the program, causing a multi-day cancellation that affected both practices and games. Staff have worked to reschedule the missed game day throughout the remaining season, which will conclude on Sunday, Mar. 16.
- **Shooting Stars Basketball:** This program is for persons with additional needs and has 42 athletes participating this season. The season will conclude in mid-March with an end-of-season celebration.

### Looking Ahead

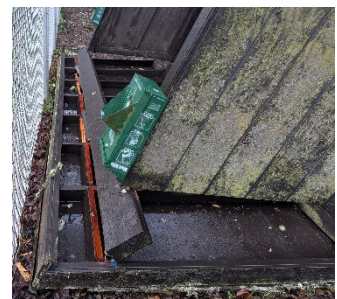
- **Mar. 22, 2025:** Oregon Ballet Theatre 2 (all ages), Milwaukie Community Center, 5-6 p.m., \$5 suggested donation for 18+.
- **Mar. 31, 2025:** North Clackamas Park four ball fields open for play.

- **June 21, 2025:** Pollination Celebration, Stringfield Family Park, 1-3 p.m., Free

## PARKS & FACILITY MAINTENANCE

### PARKS, TRAILS & NATURAL AREAS

- **Hawthorne Park Swing Replacement:** The wooden swing set at Hawthorne Park has been replaced with a new, upgraded steel swing structure due to the instability and safety concerns of the previous set.
- **Concord Property HVAC Walkthrough:** The NCPRD building maintenance staff participated in a walkthrough of the new HVAC (heating, ventilation, and air conditioning) system, where they were provided with an opportunity to ask questions and receive instruction on the system's setup and operation.
- **New Maintenance Request System:** NCPRD has implemented a new maintenance request system, which has enabled us to strategically prioritize our workload and track requests more efficiently. In the first 30 days of use, a total of 49 staff requests were submitted.
- **CPR and First Aid Training:** All building maintenance and park maintenance staff have successfully completed CPR and First Aid training.
- **Dog Run Shelter:** The dog run shelter at North Clackamas Park was damaged during the windstorm that impacted the area on Feb. 24. We are currently developing a plan for its replacement.



### CAPITAL IMPROVEMENT PROJECTS

- **Aquatic Park Stairs Repair:** The Request for Quotes (RFQ) has been submitted to the purchasing department and is currently in the queue. It has not yet been assigned to a purchasing agent.

### Looking Ahead

- **Mar. 1, 2025 (8 a.m. – noon):** A Watershed-Wide Volunteer Event will be held at Luther Road, focused on creating and planting live willow stakes.
- **Mar. 29, 2025 (10 a.m. – 12:30 p.m.):** The Mulch Madness stewardship event at Alma Myra Park will involve mulching around the rings of the Douglas fir trees within the park.